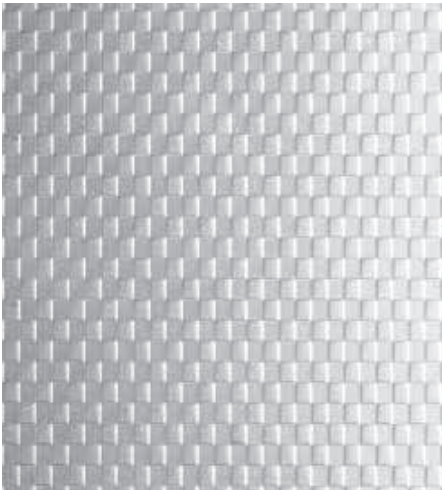




## Schindler 2600

The freight elevator that makes transportation of heavy loads effortless





04



09



10



11



18



12



About	04
Interior	09
Fixtures	10
Planning	12

**About** and why Schindler 2600 is the ultimate heavy duty elevator 04-07 **Interior** design choices offering durability and style **Fixtures** and features expanding functionality **Planning** data showing how much fits in



# Moving heavy things with ease

## > Key figures

Capacity	1000 - 4000 kg, 13 - 53 persons
Travel height	Max. 65 m, max. 21 floors
Entrance	One- or two-sided
Door width	800 - 2500 mm
Door height	2000 - 2500 mm
Drive	Frequency controlled gearless machine
Speed	0.8 to 1.6 m/s
Control	Pick-up, down collective and collective/selective mode, groups of up to 4 elevators
Equipment	Flexible range of interiors



> **Versatility**

Schindler 2600 adapts itself to fit your needs, from size to equipment features – whether in industrial buildings, warehouses, shopping centers or buildings for the health-care industry.

> **Longevity**

Robust technology, highly developed modules, quality materials and practical protection features make the elevator a durable, high-value asset.

# Versatility

## Heavy loads are lightened

You want to transport heavy cargo and goods? At a quick pace and over the long term? Then the Schindler 2600 is the ideal choice for you, as it is equipped with load-bearing capacity to meet a wide range of requirements.



Shopping centers, car parks

1.30 m x 1.75 m

< 1500 kg



Warehouses, industrial buildings, factories

1.50 m x 2.70 m

< 3000 kg



Loading docks, storage facilities

2.20 m x 3.20 m

≤ 4000 kg

# Longevity



Heavy duty interior materials



Well-proven high-quality components

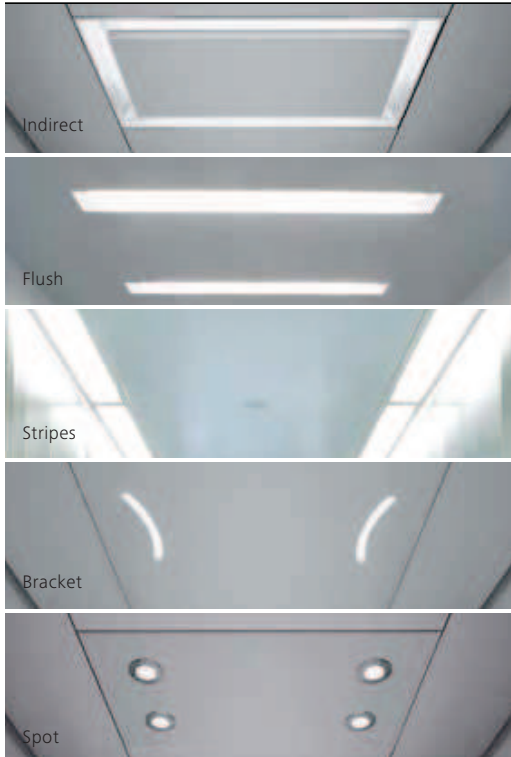


Ceiling: Flush  
Walls: Stainless steel brushed  
Floor: Aluminum checker plate  
Bumper rails: PVC



# Interior Design

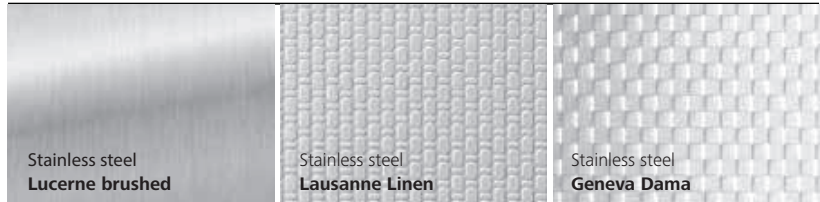
## Lighting



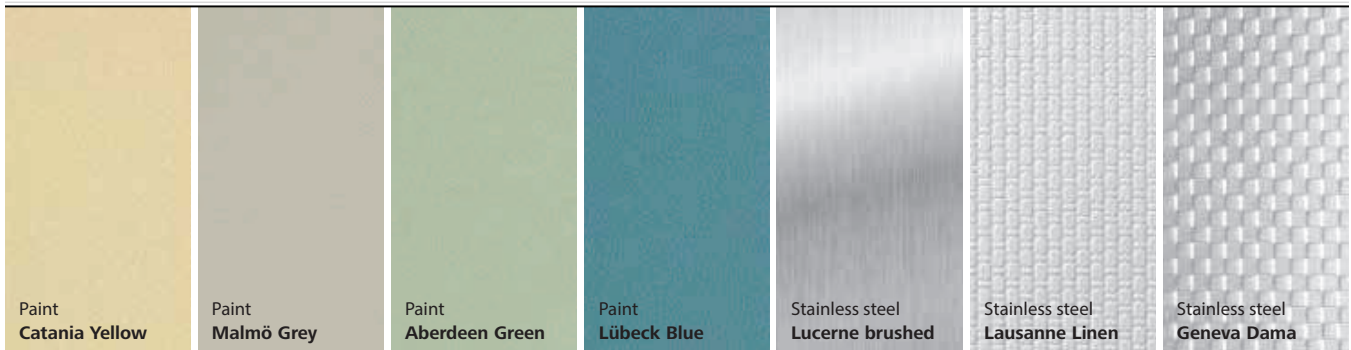
## Ceiling



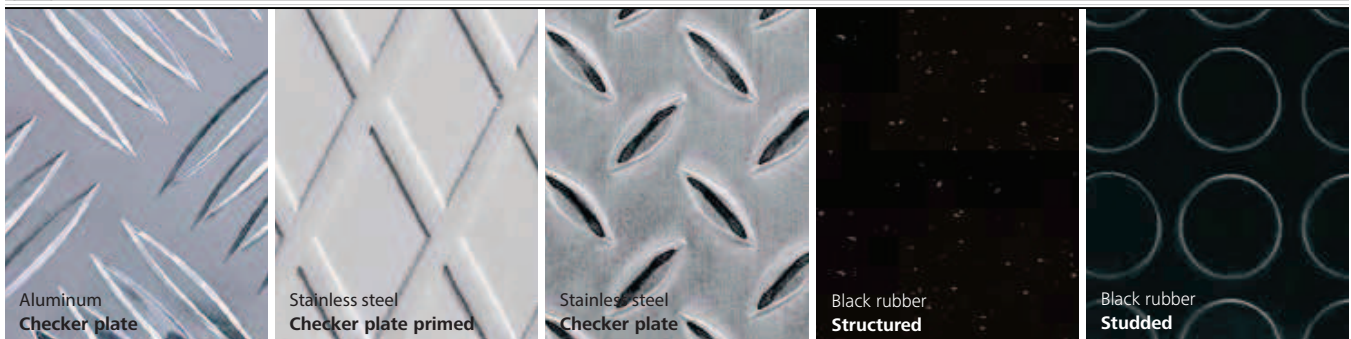
## Car door and front



## Walls\*



## Floor\*\*



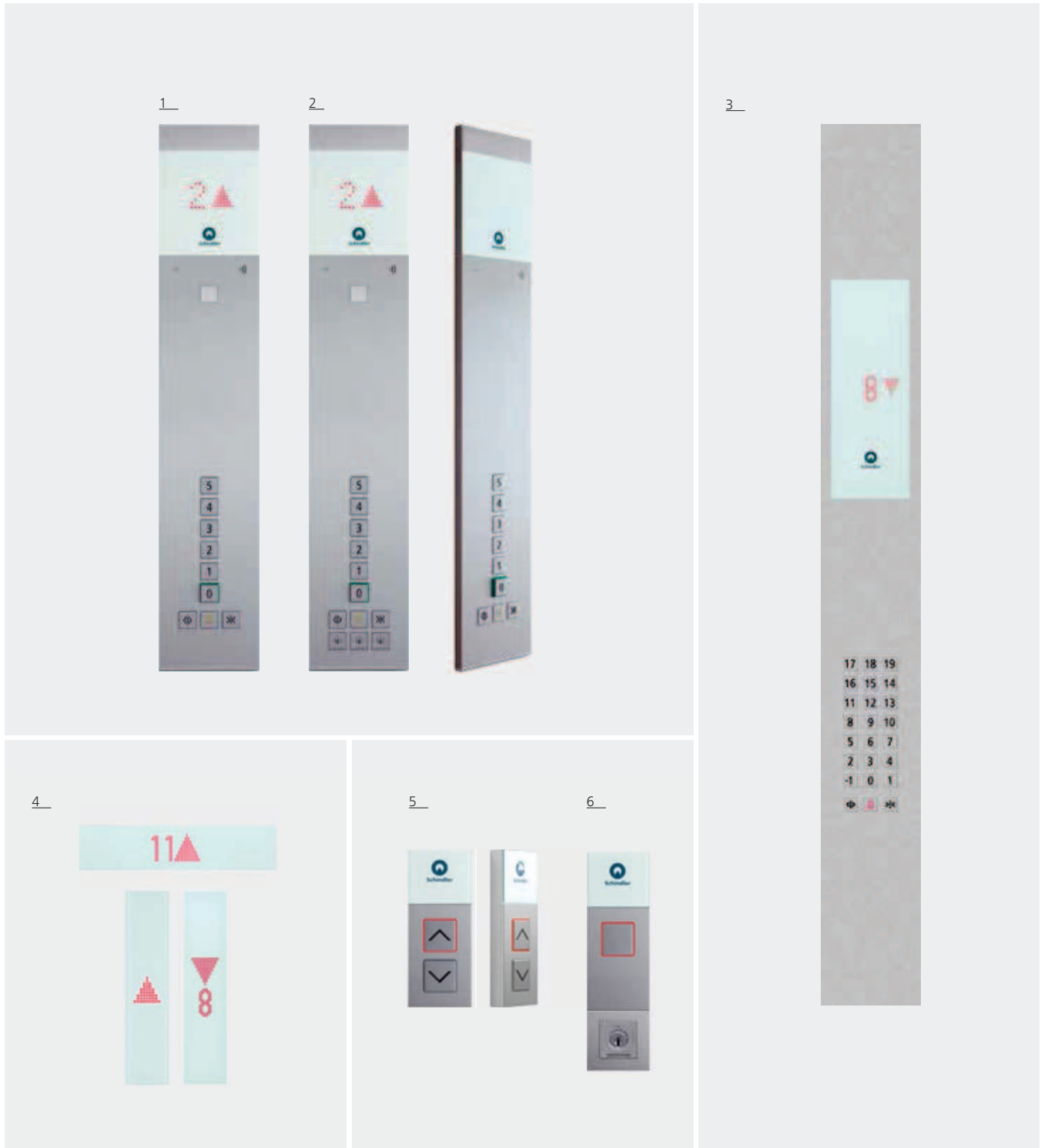
# Fixtures

## FI GS 100

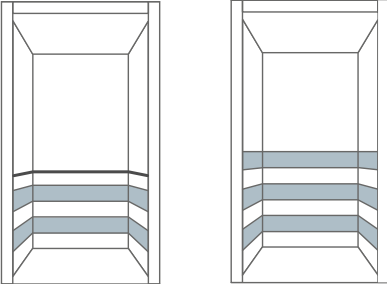
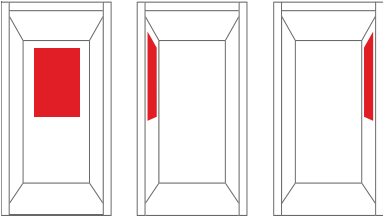
Functional half height surface design in stainless steel. Integrated white glass display with large, easily readable red LED dot matrix. Clear push buttons with red call confirmation.

## FI GS 300

Full car height flush design. Modern and robust face plate in stainless steel brushed, mirror polished or linen. Push buttons with clear white illumination and red call confirmation.

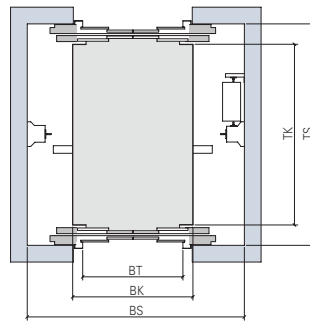
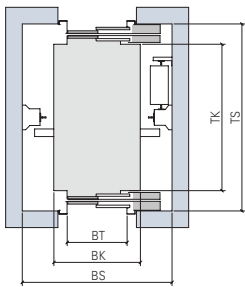
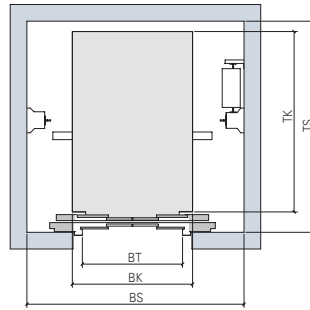
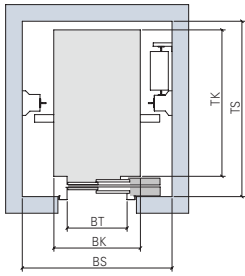
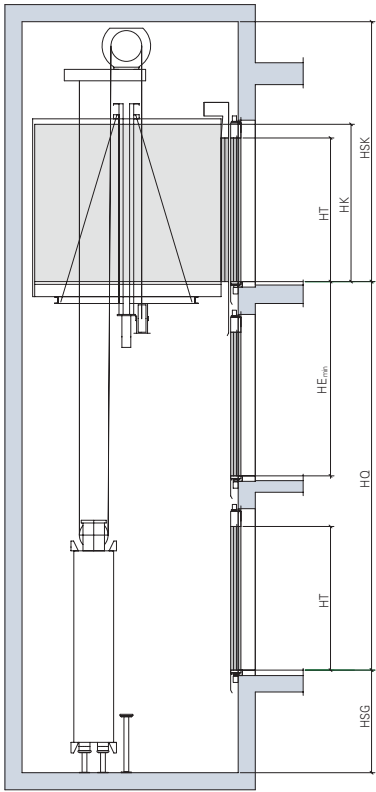


# Features and options





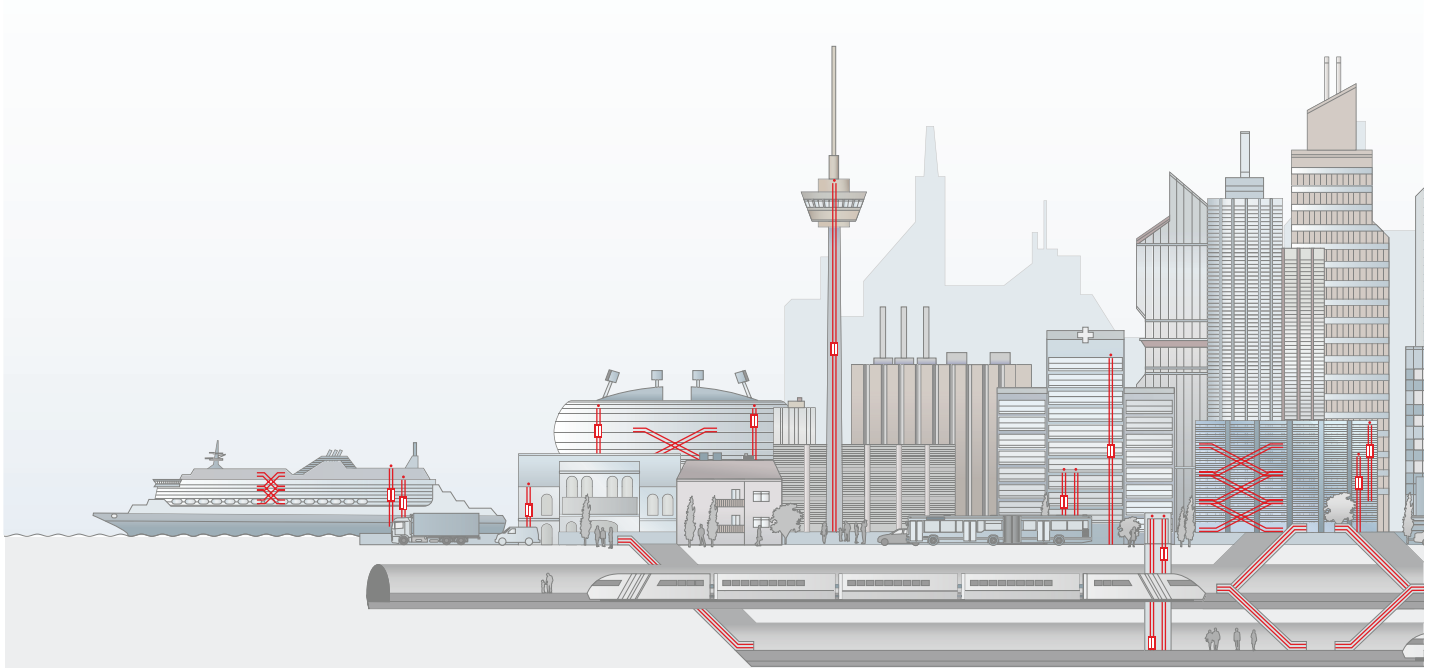




# From the subway to the skyline. Providing urban mobility.

Mobility is an essential requirement in the world in which we live and work. Schindler stands for urban mobility and is recognized as a hallmark of quality and safety. Daily, one billion people worldwide place their trust in Schindler products and services.

Schindler provides urban mobility with elevators, escalators and services that are engineered for efficiency and sustainability. Schindler accompanies the development of buildings from planning and construction to daily operation, thus safeguarding their lifetime value.



## Ingenious planning

Selecting the right mobility solution means to analyze the building requirements and to calculate the potential traffic patterns. This is at the core of Schindler's planning support to ensure efficient mobility and a convenient journey for passengers. Bringing together global know-how for each individual project.

Schindler planning services:

- Expert consultants for traffic and product planning
- Traffic analysis and calculation service
- Specialized engineering centers for customized configurations
- Planning guidelines and tools to expedite shaft planning, building layout and product selection/configuration

## Seamless delivery

With a full-range portfolio of elevators and escalators, Schindler provides mobility solutions for any building application. Schindler customers can rely on sustainable technology, excellent project management and profound installation methodologies. It's always the perfect fit.

Technology for all building types and mobility needs:

- Residential and office buildings
- Commercial towers, retail environments
- Hospitals and public buildings
- Heavy-traffic environments
- High-rise buildings
- Cruise liners



## Efficient operation

Smooth, hassle-free operation and very high availability are the result of professional maintenance and modernization. Environmental and operational efficiency add value to the investment. Reliability and sustainability – every day, all day.

The maintenance, repair and modernization portfolio:

- Global network of branches and service points
- Skilled and certified technicians and fitters
- Service solutions for all building types and requirements
- Availability and fast delivery of spare parts
- Quick responding call-center services
- E-monitoring diagnostic tools
- Replacement and step-by-step modernization solutions

## Continuous enhancement

Schindler constantly develops new products and features to set standards and increase efficiency. Technological milestones that provide mobility to the urban society – conveniently, safely and ecologically. Progress needs innovation.

The cutting-edge developments:

- PORT Technology – traffic, building communication and access-control management that calculates the swiftest route in the building
- Schindler regenerative PF1 clean drive technology
- Space-saving, weight-optimized designs
- Flexible modernization concepts from full replacements to partial retrofits
- Eco-mode options for escalators and elevators

# When vision meets discipline. Schindler partners with Solar Impulse.



Schindler is a main partner of **Solar Impulse**, the zero fuel airplane capable of flying around the world propelled only by solar energy.

This publication is for general informational purposes only and we reserve the right at any time to alter the product design and specifications. No statement contained in this publication shall be construed as a warranty or condition, expressed or implied, as to any product, its fitness for any particular purpose, merchantability, quality or shall be interpreted as a term or condition of any agreement regarding the products or services contained in this publication. Minor differences between printed and actual colors may exist.